



Barbara Osborne

Pineneedlerock

Seattle, WA

Email: basketmaker47@icloud.com

Website: www.pineneedlerock.com

Artist Statement with Brief Resume:

My work honors the rocks, trees and shells they are made of, and explores shapes I find or imagine. My process is to see or think of a shape, then experiment with materials to create that shape, or until the materials suggest something else. My influences are as disparate as the essays of Ursula LeGuin, Japanese Deco artists, teachers I have studied with, and patterns I see in city skylines, tree branches or woven rugs.

I cut, shape and finish rock slices; gather and treat pine needles, construct shapes and negative space. The natural materials and the shapes tell stories:

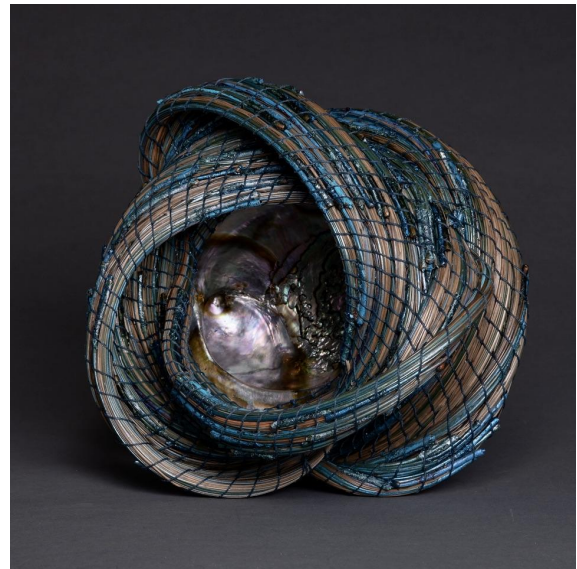


50 years of growth or 50 million years of weather, suggestions of form or function, and what the materials and shapes have witnessed, carried or contained.

I am happy when I am in my studio working on a new idea or conversing with my artist friends about new directions to try. In 2022 I was privileged to be in Arches National Park in Utah, looking at the magnificent rock structures there. My eyes strained to open wide enough to take in what was there and now I am working to use what I saw.



Besides the skills I have learned from many extraordinary teachers, I have found some new techniques: I developed a harness which allows me to center my pieces on rock slices or sea shells, I attach pine needle coils to create horizontal plates around vertical shapes, and stack coils to create sacred geometric forms.



Recently, the National Basketry Organization recognized my work with a special award for exploration of architectural forms.

My work also serves as a vehicle for me to build community. I have shared my knowledge and skills with members of the basketry community through the NW Basket Weavers Guild, and with members of the Somali Family Safety Task Force by teaching classes, creating an annual conference, organizing and hosting events, and by collecting and donating materials to these groups.

My work has been selected for display by many galleries including the Philadelphia Museum of Art Craft Show, Bellevue Art Museum Art and Craft Show, Mesa Contemporary Crafts, and Craft Forms International. In 2021, I was a featured artist at Northwind Gallery in Port Townsend, Washington. Photos of my work have been selected to be published in print and online through Fiber Arts Now, National Basketry Organization and Surface Design Association. In 2022 I was selected for a grant award from the Allied Arts Foundation.

In some ways, my process is engineering as much as art; the pine needle coils turn corners, create shadow, are layered and stacked. Translucent agate pieces incorporate more light; suspending rocks with coils or balancing antlers add the element of gravity. I am engaged in a sculptural exploration of what pine needles and rock slices can do.

