

KIMBERLY TROWBRIDGE: INTO THE GARDEN

Trowbridge's large solo exhibition of paintings at Bainbridge Island Museum of Art reflects images, ideas, and methods developed from 2018-2020 as Creative Fellow at the Bloedel Reserve, on Bainbridge Island.

Trowbridge was born in Everett, WA. She is a two-time Neddy Award Finalist (2014, 2016), and an Artist Trust GAP Grant recipient (2014). She received her MFA from the University of Washington in 2006. Kimberly is the Director of the Trowbridge Atelier of Painting, at Gage Academy of Art in Seattle.

About Bloedel Reserve

The Bloedel Reserve is an internationally renowned public garden and forest preserve. Gentle trails meander through nearly 150 acres of sculpted landscapes, woods, meadows, and wildlife habitats, creating a one-of-a-kind immersive experience in nature. Book timed tickets online.

Open Tue-Sun, rain or shine. Hours vary by season.
7571 NE Dolphin Drive, Bainbridge Island, WA 98110
www.bloedelreserve.org | (206) 842-7631 x9

Bloedel Reserve Creative Residency

Established in 2015, the Bloedel Reserve Creative Residency program fosters creative thinking inspired by nature and provides opportunity to deeply explore the connection between humans and the environment. The residency program provides artists and innovative thinkers with a three-week stay on the Bloedel grounds, with unlimited access to the Reserve's 150 acres of sculpted gardens, forests, meadows, and wildlife habitats.

About Bainbridge Island Museum of Art

BIMA inspires curiosity, wonder and understanding by connecting people with the contemporary art and craft of the Puget Sound region. Located a stone's throw away from the Bainbridge Island ferry terminal, BIMA is the gateway to Bainbridge Island and beyond. Since opening its LEED Gold certified building in 2013, BIMA has become the cultural living room for the community.

Open daily, 10am-5pm | FREE Admission
550 Winslow Way E, Bainbridge Island WA 98110
www.biartmuseum.org | (206) 842-4451

Major Exhibition Sponsors:

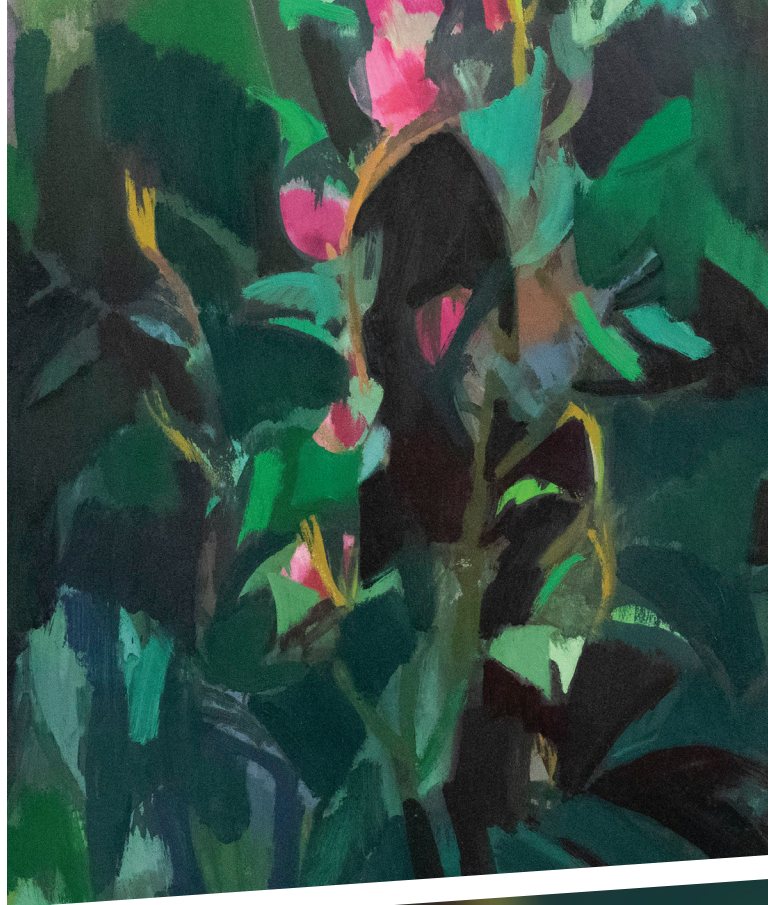


The Creative Residency Program and the Fletcher Bay Foundation Creative Residency Endowment at Bloedel Reserve are made possible through the heartfelt generosity of many individuals, businesses, and grantors.

Available artworks Courtesy of Linda Hodges Gallery.

BLOEDEL RESERVE

WALKING TOUR



KIMBERLY TROWBRIDGE: INTO THE GARDEN

A COLLABORATION BY:



BLOEDEL
RESERVE



BAINBRIDGE ISLAND
MUSEUM OF ART

EXHIBITION ON VIEW AT
BAINBRIDGE ISLAND MUSEUM OF ART
THROUGH MAY 30, 2021

KIMBERLY TROWBRIDGE: INTO THE GARDEN

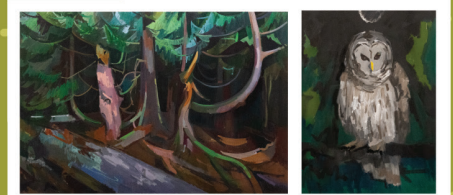
A selection of works inspired by Bloedel Reserve on display at Bainbridge Island Museum of Art. See all 30 paintings at BIMA through May 30, 2021. Details on reverse.

CAMELLIA TRAIL



Clockwise from top left:
Camellia Walk III, 2020;
Camellias in the Forest, 2021;
Camellia Walk, 2018;
Light in the Forest (Annunciation), 2020

MEADOW TRAIL



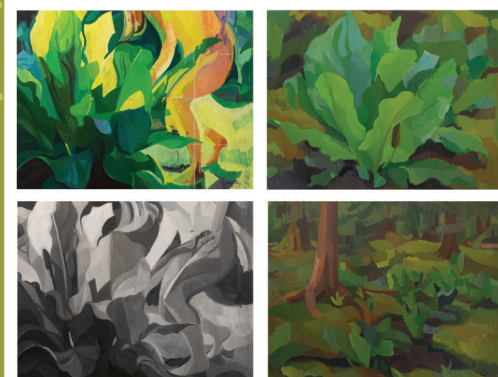
Clockwise from top left:
Theater of Destruction, 2020;
Owl, 2020;
Vine Maple and Sword Fern, 2019

REFLECTION POND



Clockwise from top left:
Reflecting Pond, 2019;
Reflecting Pond (Persephone) II, 2020;
Reflecting Pond (Tonal), 2019;
Light in the Cedars (Annunciation), 2020

MOSS GARDEN



Clockwise from top left:
Nymph & Skunk Cabbage, 2020;
Skunk Cabbage, 2018;
Moss Garden, 2018;
Nymph & Skunk Cabbage (Tonal), 2020

